

1



On Highway 325, looking East
Coordinates (Lat,Lon):
31.394,-98.426

2



On Highway 572, looking Northeast.
Coordinates (Lat,Lon): 31.388,-98.419

3



On Highway 332, looking Southwest.
Coordinates (Lat,Lon): 31.396,-98.394

4



On Highway 332, looking South.
Coordinates (Lat,Lon): 31.410,-98.392

5



On Highway 338, looking West.
Coordinates (Lat,Lon): 31.388,-98.364

6



Just off Highway 572, looking South.
Coordinates (Lat,Lon): 31.387,-98.350

7



On Highway 572, looking South along the highway. Coordinates (Lat,Lon): 31.383,-98.395

8



On Highway 572, looking Southwest.
Coordinates (Lat,Lon): 31.379,-98.382

9

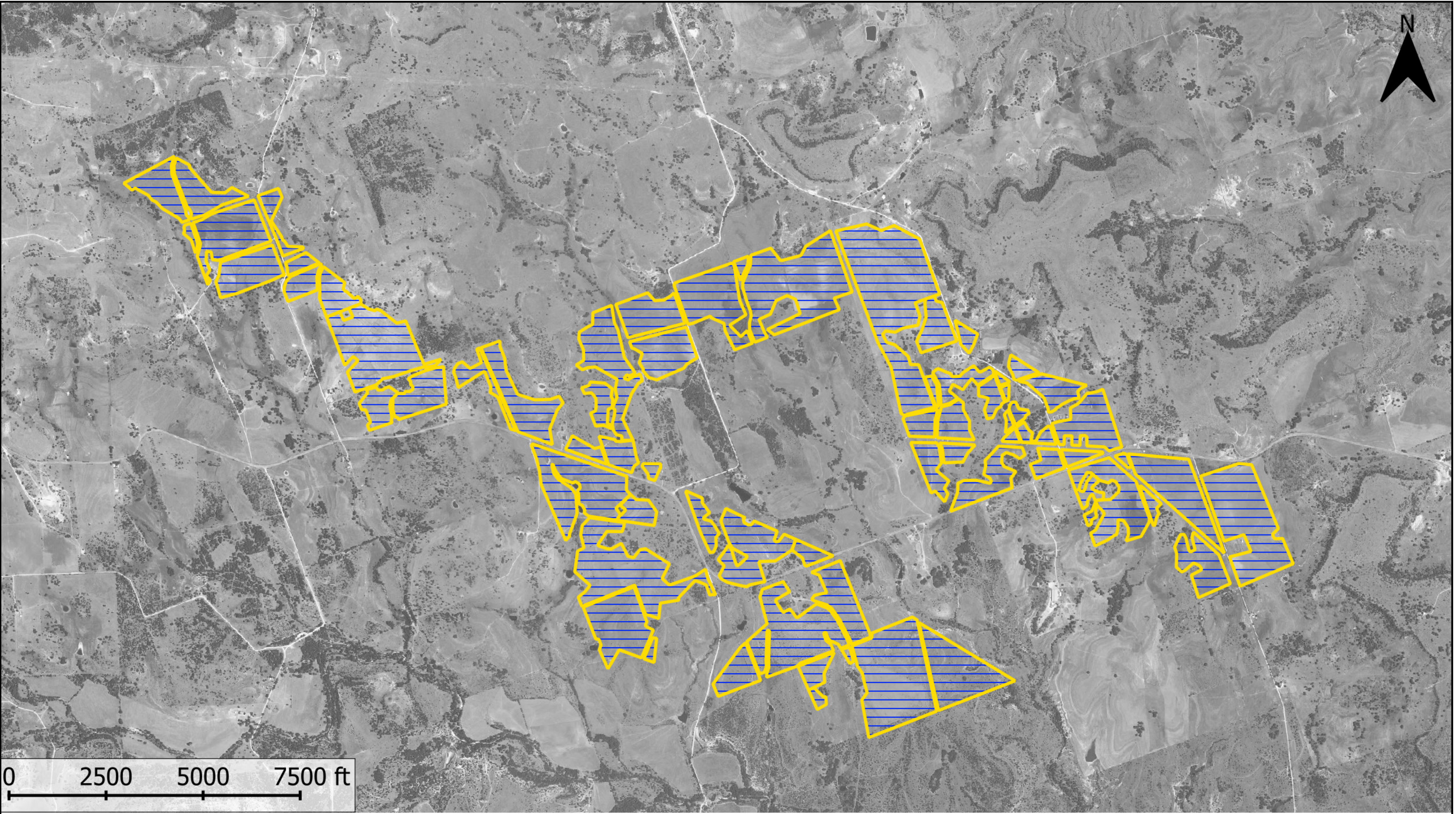
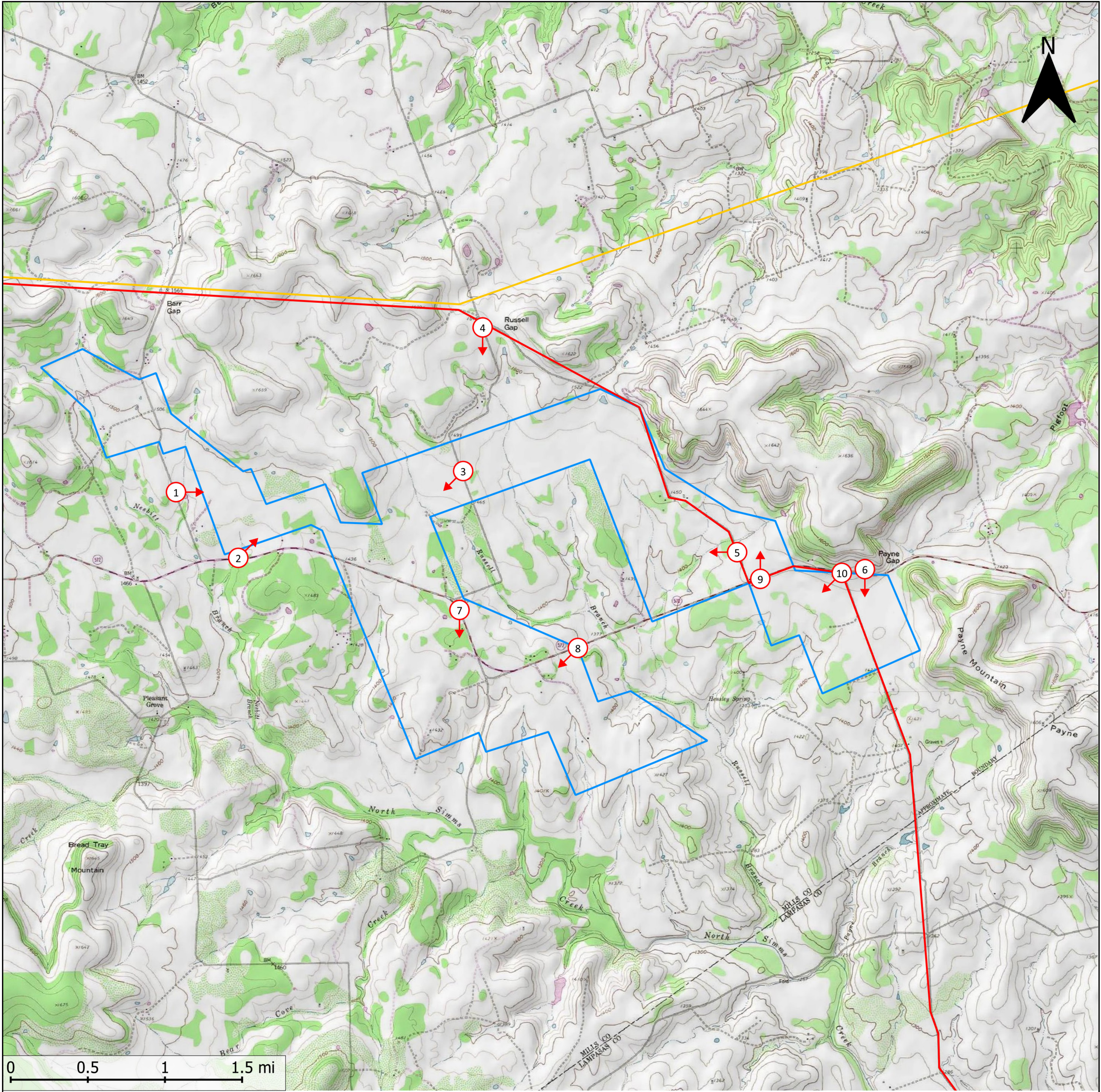


On Highway 572, looking North towards Payne Mountain. Coordinates (Lat,Lon): 31.385,-98.361

10



On Highway 572, looking Southwest.
Coordinates (Lat,Lon): 31.386,-98.352



PAYNE GAP SOLAR FARM PROSPECT

MILLS COUNTY, TEXAS

TOPOGRAPHIC MAP - DRAFT

0.0mi0.5mi1.0mi1.5mi

CONTOUR INT: 20'

FILE: 30867-K2M-PayneMnt-TopoMap-DRAFT-3.pdf

MAPPING: W. OSBORN

IMAGES: GOOGLE EARTH,
J. KUNKLE

DRAFT: K2 MANAGEMENT

REV: MAR 11, 2019

TRANSWESTERN SOLAR
9W 57th St, Ste 4500
New York, NY 10019

William Osborn,
515 Congress Ave. Ste 2450 Austin TX 78701
(512) 476-9529

K2 Management,
203 Crescent St. Ste 205,
Waltham MA 02453

LEGEND

- ONCOR 345kV CREZ Transmission Line Route Approved by PUC, Docket 37464, April 5, 2010.
- LCRA 138kV High Voltage Electric Transmission Line (approx. location)
- Proposed development zone
- Proposed buildable areas
- Imagery view point with direction arrow
- Proposed location of solar array tables (indicative only)**.

* Photographic images #7 to #10 are sourced from Google Earth StreetView at the coordinates stated above, imagery dated 2018.

** Fixed tilt solar PV array installation assumed. This design is indicative only and should not be used in the planning application process.